

COMMUNITY

ART PROJECT

LET'S GO!



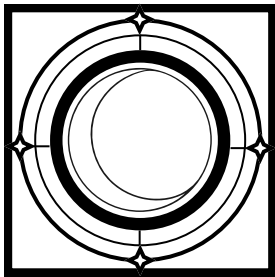
MAKE ART FOR THE APRIL 8 TOTAL ECLIPSE

HELP US PAINT THE TOWN!

All ages are **invited to make Eclipse or Space-themed Artwork** to be displayed in Shelby County, Indiana from **March 1-April 15** to celebrate the upcoming Total Eclipse on April 8, 2024.

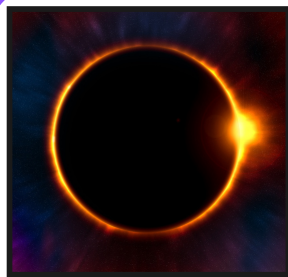
Included are some ideas to get you started. **FEEL FREE TO GET CREATIVE AND DO YOUR OWN THING!**

COLOR



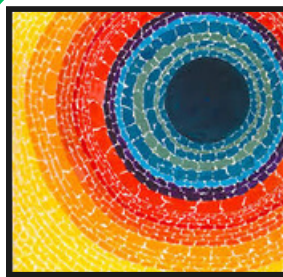
Pick up a Coloring Sheet at the Shelby County Public Library and make it your own.

PAINT



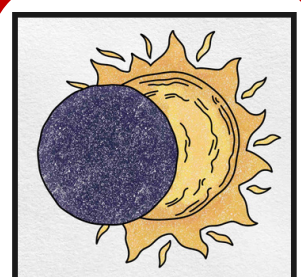
Paint the eclipse any way that you imagine it! You could create a Shelby County Eclipse landscape.

COLLAGE



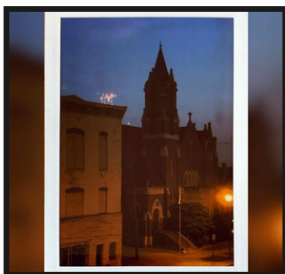
Use cut paper to create your own galaxy. Look up artist, Alma Thomas, for inspiration.

DRAW



Draw the sun and moon. Check out helloartsy.com/draw-eclipse if you want basic instructions.

PHOTOGRAPH



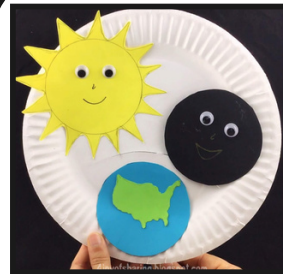
Take Night Photos in Shelby County, IN! Capture our cities and countryside at night.

BLOCK OUT



Cut out a circle and paint or color around it. Learn more at booksandgiggles.com

CRAFT

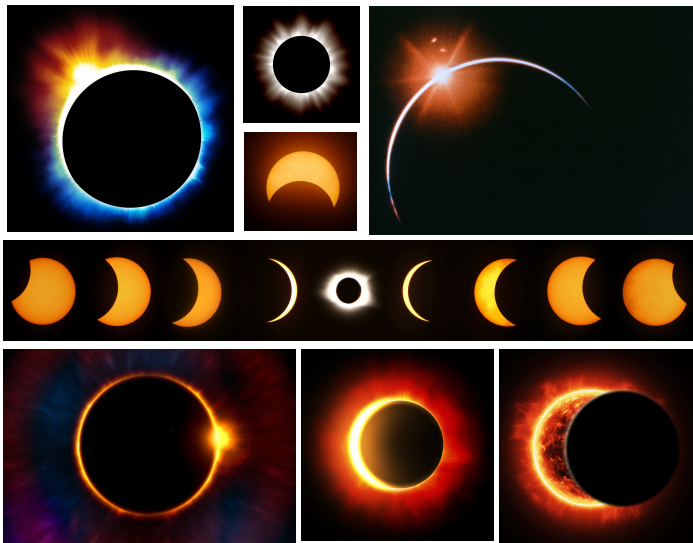


Color, cut, and glue to make your own universe. This craft came from the thejoysharing.com

SHADOW ART



Create a silhouette. Use dark paper to cut out a landscape or draw / paint shadow art.



ART SUBMISSION DETAILS
PLEASE SUBMIT
ART BY FRIDAY,
FEB. 16, 2024

DROP-OFF LOCATION:

Please drop off finished artwork to the **Shelby County Public Library** by 7pm on Fri., Feb. 16.
 *57 W Broadway St., Shelbyville IN 46176; 317-398-7121

PROJECT GUIDELINES:



Scan to keep updated about more Eclipse Activities in Shelby County!

The sky is the limit when it comes to your creativity!

- The theme of the artwork must be the Eclipse, Outer Space, Shadow Art, or Shelby County at Night.
- You may use any art supplies that you would like for your creation. Photographs, Digital Art, and Sculpture are welcome!
- **Any age may submit a piece of art.**
- We ask that the size of the artwork be at least 8x8" and to not exceed 24x24"
- Please put a spray fixative on any charcoal, chalk or oil pastel work (*Anything that smears easily!)
- Artwork on paper will be hung with repositionable mounting tabs. If artwork is framed, please make sure that there is a hanger on the back. Sculpture will be protected in a display case.
- All work must include your Name, Phone Number & Email Address. Please write or attach your contact info to the backside of the artwork.
- **Artwork will be displayed in Shelby County from March 1 - April 15, 2024.**
Locations of where the artwork will be showcased will be announced!
- We will not be responsible for or coordinate any artwork sales.
- **Artwork must be picked up between April 16-30** at the Shelby County Public Library. We will not hold onto any unclaimed artwork.

Schools, Churches, and Local Nonprofits are encouraged to make this an activity for your students or participants!

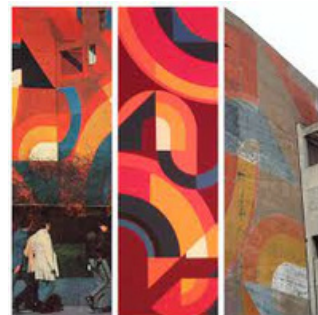
QUESTIONS:

Any questions about this Community Art Project can be directed to **Laura Land**, *Blue River Community Foundation* (317) 392-7955 ext. 107 or lland@blueriverfoundation.com

LEARN ABOUT AN ARTIST WHO WORKED IN SHELBYVILLE, IN



Roland Hobart was a native of Innsbruck, Austria who came to Shelbyville, IN in 1966. He had an art studio in Shelbyville and became a well-known screen printing artist, mural artist and educator. He also helped create elaborate sculptures with students for proms at Shelbyville High School.



Urban Wall Mural in Indianapolis

A Hobart Screen Print



Prom Sculpture at the William L. Garrett Memorial Gymnasium

